

University Medical Center, Inc.

Combined Statements of Operations and Changes
in Net Assets

	Year Ended December 31	
	2010	2009
	<i>(In Thousands)</i>	
Unrestricted revenue:		
Net patient service revenue	\$ 429,833	\$ 396,862
Other revenue	18,947	18,576
Total net revenue	448,780	415,438
Expenses:		
Salaries and wages	139,272	128,251
Employee benefits	37,032	32,232
Supplies	62,464	55,713
Drugs	28,209	29,119
Contract services – UofL	52,754	48,172
Contract services – Other	30,158	30,428
Rent and leases	14,212	14,967
Repairs and maintenance	9,847	8,538
Insurance	5,620	5,555
Provision for bad debts	4,477	5,326
Other	13,722	13,522
Interest	3,815	4,129
Provider tax	5,909	7,564
Depreciation and amortization	17,791	16,574
Total expenses	425,282	400,090
Operating income	23,498	15,348
Nonoperating gains (losses), net:		
UofL affiliation agreement surplus cash flow	(11,000)	(11,000)
Nonoperating income	179	587
Other contributions, gains and (losses), net	97	(989)
Total nonoperating losses, net	(10,724)	(11,402)
Excess of revenue over expenses	\$ 12,774	\$ 3,946

Continued on next page

University Medical Center, Inc.

Combined Statements of Operations and Changes
in Net Assets (continued)

	Year Ended December 31	
	2010	2009
	<i>(In Thousands)</i>	
Unrestricted net assets:		
Excess of revenue over expenses	\$ 12,774	\$ 3,946
Unrealized gains	601	-
Net assets released from restrictions for purchase of property, plant, and equipment	182	3,688
Increase in unrestricted net assets	13,557	7,634
Temporarily restricted net assets:		
Contributions, fees, grants and bequests	182	1,974
Net assets released from restrictions for purchase of property, plant, and equipment	(182)	(3,688)
Decrease in temporarily restricted net assets	-	(1,714)
Increase in net assets	13,557	5,920
Net assets at beginning of year	152,295	146,375
Net assets at end of year	\$ 165,852	\$ 152,295

See accompanying notes.

University Medical Center, Inc.

Combined Balance Sheets

	December 31	
	2010	2009
	(In Thousands)	
Assets		
Current assets:		
Cash and cash equivalents	\$ 44,546	\$ 23,885
Short-term investments	48,474	43,235
Patient accounts receivable, less allowance for uncollectible accounts of \$5,489 in 2010 and \$6,271 in 2009	61,860	63,398
Other receivables	5,254	17,606
Estimated amounts due from third-party payors	3,393	1,499
Inventories	7,182	6,739
Prepaid expenses and other	5,737	7,079
Assets limited as to use which are available for certain current liabilities	1,707	1,678
Total current assets	178,153	165,119
Long-term investments	—	13,139
Assets limited as to use:		
Debt service funds – under bond indenture agreements	10,550	10,287
Self-insurance	4,310	4,299
Funded depreciation – by Board of Directors	14,727	14,697
Total assets limited as to use	29,587	29,283
Less amount classified as a current asset	(1,707)	(1,678)
	27,880	27,605
Property, plant, and equipment, net of accumulated depreciation and amortization	107,163	110,104
Other assets:		
Investment in joint ventures	842	766
Deferred financing costs, net of accumulated amortization of \$1,830 in 2010 and \$1,720 in 2009	623	733
Long-term receivables	14,215	11,522
Other	1,554	998
Total other assets	17,234	14,019
Total assets	\$ 330,430	\$ 329,986

	December 31	
	2010	2009
	(In Thousands)	
Liabilities and net assets		
Current liabilities:		
Accounts payable	\$ 10,278	\$ 12,821
Accrued salaries	11,802	9,884
Accrued expenses	16,492	13,777
Accrued interest	1,484	1,608
Deferred revenue	25,483	36,428
Affiliation agreement payable	11,000	10,932
Current portion of long-term debt	8,452	8,369
Total current liabilities	84,991	93,819
Other noncurrent liabilities	17,886	13,803
Long-term debt, net of current portion	61,701	70,069
Total liabilities	164,578	177,691
Net assets:		
Unrestricted net assets	165,852	152,295
Total net assets	165,852	152,295

Total liabilities and net assets

\$ 330,430	\$ 329,986
------------	------------

See accompanying notes.

**University Medical Center
Operating Statistics**

	2011	2010
Admissions	17,401	17,280
Patient Days	95,742	97,180
Length of Stay	5.5	5.6
Average Daily Census	262.3	266.2
Surgical Procedures	8,901	9,215
Outpatient Center Surgical Procedures	3,257	3,104
Endoscopy	4,996	4,997
Births	1,753	1,908
Emergency Visits	41,392	41,436
First Care Visits	20,754	17,886

**University Medical Center
Contracts Summary (A)**

Title	Description
First Care	Independent Contracted MDs in First Care Clinic
Contracted Services	Independent Contractors
Ikon	Equipment lease and maintenance agreements; copy services agreements
Operating Leases	Non-Cancellable Operating leases (excluding IKON)
BAA	Business Associate Agreements
Agency	Staffing Agreements
Transfer	Facility Transfer Agreements
Student	Student Affiliation Agreements
Software Maintenance	Software Maintenance Agreement
Equipment Maintenance	Equipment Maintenance, support, PMs
Space Lease	Space Rental Agreements

(A) UMC has over 1200 active contracts in excess of \$60 million excluding University contracts.

University Medical Center, Inc.
Leases

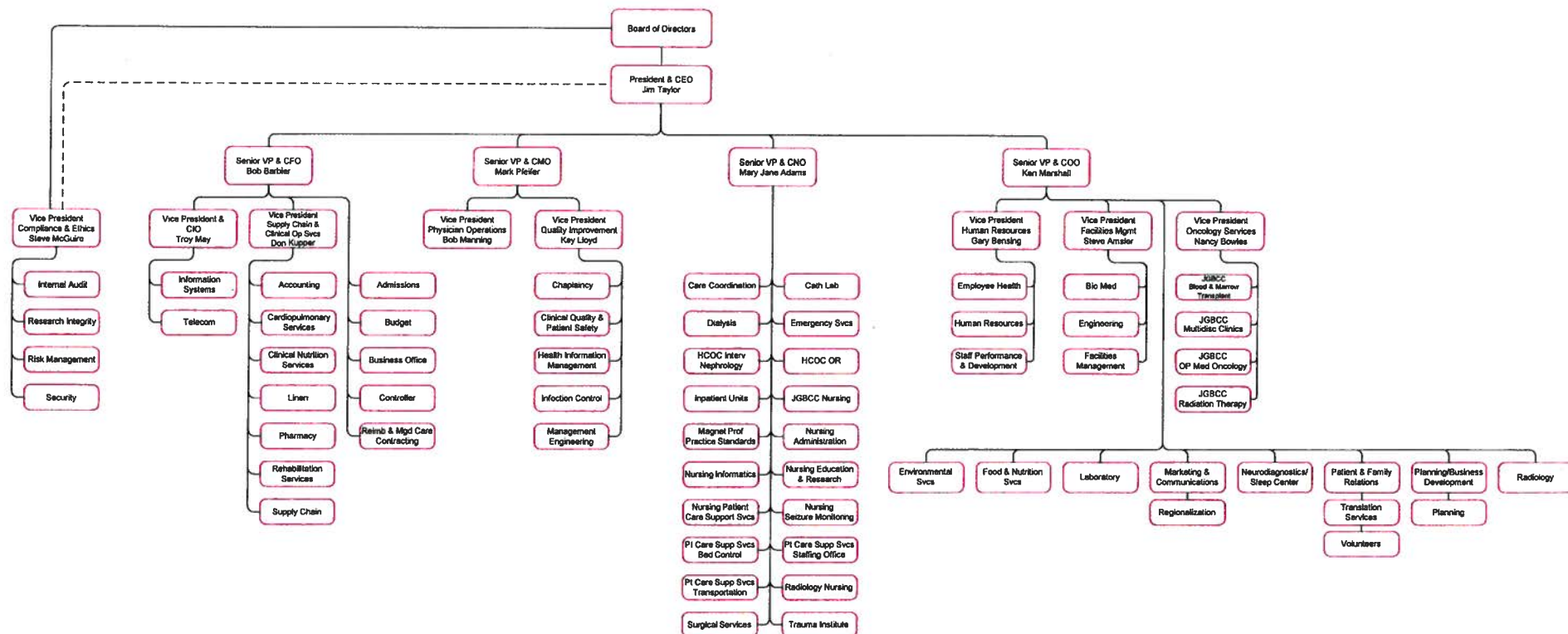
Description	2012	2013	2014	2015	Total
<i>Operating Leases</i>					
Clinical equipment	1,791,730	809,968	50,663	0	2,652,360
Rental Space	468,502	263,865	5,737		809,794
Supply distribution	14,856	11,880	3,708	1,188	32,870
Video Tower	136,980	114,150			251,129
<i>Capital Leases</i>					
Clinical equipment	2,637,084	1,622,491	827,021	657,024	5,743,620

Question # 21

University Medical Center dba University of Louisville Hospital
Facility SummaryLast Updated - Mar- 2012
Print Date - 03/07/2012

ID	Facility Name	Facility Usage	Address	Year	Status	Owner	% Owned	Size - SF	Spaces	Remarks
A	Concentrated Care Building - CCB	Hospital	545 S. Jackson St.	1980	Leased, through UofL	State of KY	100%	444,914	-	Long term lease
B	Graham Brown Cancer Center - BCC	Outpatient Center	528 S. Jackson St.	1980	Leased, through UofL	State of KY	100%	121,826	94	Long term lease
C	Ambulatory Care Building - ACB	Ambulatory Care / Offices	550 S. Jackson St.	1980	Leased, through UofL	State of KY	100%	211,806	-	Long term lease
D	Inst. Services Ctr. / Parking - ISC	Hospital Services	530 S. Jackson St.	1980	Leased, through UofL	State of KY	100%	67,687	-	Long term lease
	Parking Garage	Parking Garage						294,000	801	
E	Lampton Building	Data Center / classroom	535 S. Hancock ST.	1950's	Leased, through UofL	State of KY	100%	11,964	5	Long term lease
F	Speed Lot	Flat Lot Parking	Chestnut St.	NA	Leased, through UofL	State of KY	100%		221	Long term lease
G	Carmichael lot	Flat Lot Parking	512 S. Jackson St.	NA	Leased, through UofL	State of KY	100%		140	Long term lease
H	V V Cooke Lot	Flat Lot Parking	578 S.Hancock	NA	Leased, through UofL	State of KY	100%	-	547	Long term lease
J	Med Center One	Suite 140 - Bus. Offices	501 E. Broadway	2009	Leased	Sun Properties	100%	13,000	14	Lease less than 3 years
		Suite 100 - Reimb. Offices	501 E. Broadway	2009	Leased	Sun Properties	100%	1,550		Lease less than 2 years
		Suite 170/180 - Research Offices	501 E. Broadway	2006	Leased	Sun Properties	100%	5,043		Lease less than 2 years
		Suite 360 - PR / Planning	501 E. Broadway	2006	Leased	Sun Properties	100%	2,261		Lease less than 3 years
K	Broadway Parking - Med Ctr One	Flat Lot Parking		NA	Leased	Sun Properties	100%		69	60 Mo lease ends 8/31/11
L	Hess (Danka) Building - Suite 100	BCC Research Offices	552 E. Market St.	1950's	Leased	Hess	100%	3,600	12	Lease less than 2 years
		ULH Trauma Research								
M	Residence Inn	Sleep Study lab	333 E. Market St.	2005	Leased	RLJ II - R Louisville DT KY Lessee, LLC	100%	10 Rms	10	Lease ends 6/30/14 with a 30 day out
N	Health Care Outpatient Center - HCOC	Suite 180 - Pharmacy	401 E. Chestnut St.	2009	Leased from ULP	Landmarks Corp.	100%	2,618		Lease Thru 2018, +5,+5
		Suite L10 - Surgery	401 E. Chestnut St.	2009	Leased from ULP	Landmarks Corp.	100%	23,397		Lease Thru 2018, +5,+5
		Suite 270 - Rehab	401 E. Chestnut St.	2009	Leased from ULP	Landmarks Corp.	100%	7,987		Lease Thru 2018, +5,+5
		Suite 670 - Vascular	401 E. Chestnut St.	2009	Leased from ULP	Landmarks Corp.	100%	2,716		Lease Thru 2018, +5,+5
		Suite 210 - Imaging	401 E. Chestnut St.	2009	Leased from ULP	Landmarks Corp.	100%	9,260		Lease Thru 2018, +5,+5
		Suite 380 - Lab	401 E. Chestnut St.	2009	Leased from ULP	Landmarks Corp.	100%	1,591		Lease Thru 2018, +5,+5

UNIVERSITY MEDICAL CENTER, INC.
dba the University of Louisville Hospital and the James Graham Brown Cancer Center



2/13/12

N:\ExecOff\Org Charts\Org Chart.2.13.12 with names.pdf

James Graham Brown Cancer Center Administrative Flow Chart

Question # 32

